

Theory-choice, transient diversity and the efficiency of scientific inquiry

Appendix

AnneMarie Borg¹, Daniel Frey², Dunja Šešelja³, and Christian Straßer¹

¹*Institute for Philosophy II, Ruhr-University Bochum*

²*Faculty of Economics and Social Sciences, Heidelberg University*

³*Munich Center for Mathematical Philosophy, LMU Munich*

1 Easy landscape

1.1 Success of agents on the easy landscape

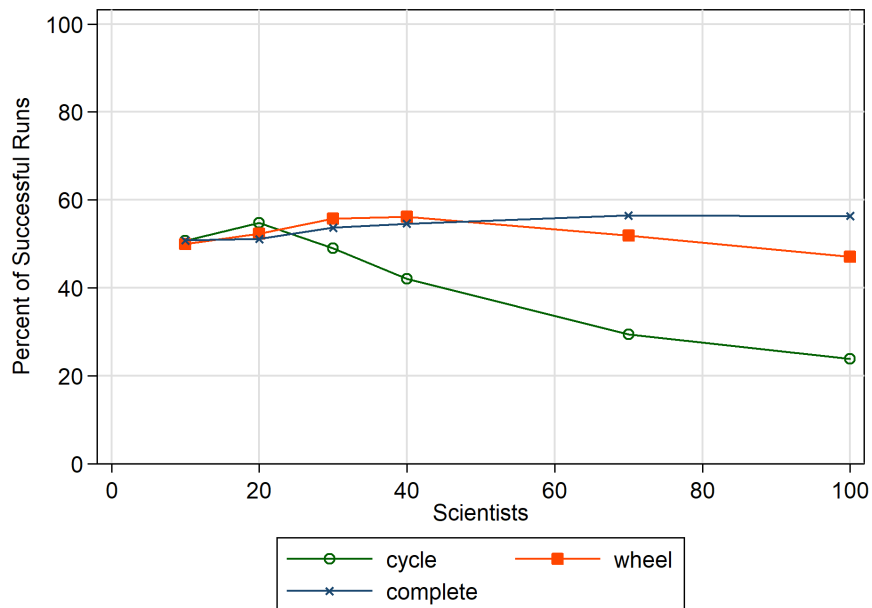


Figure 1: Percentage of successful runs by agents who employ assessment D, with no thresholds, on the easy landscape.

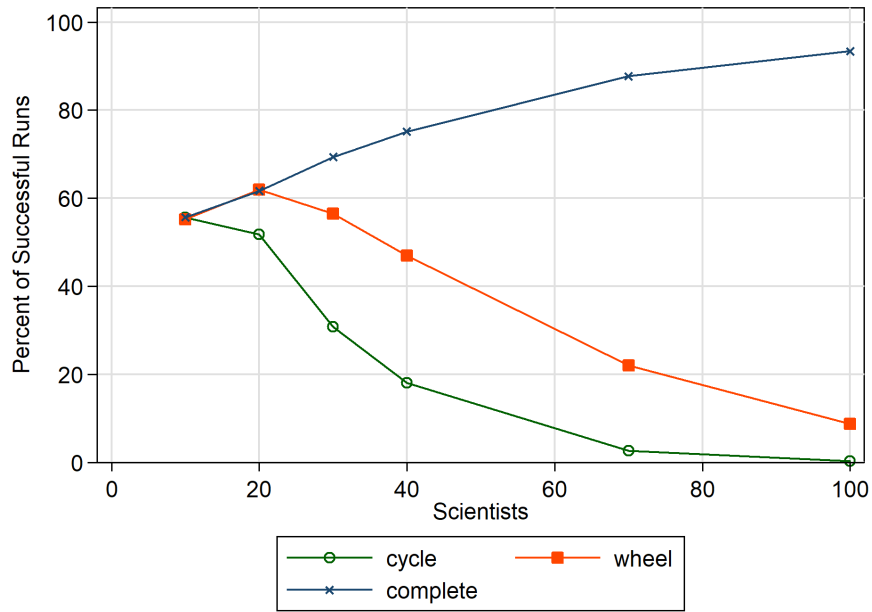


Figure 2: Percentage of successful runs by agents who employ assessment D, with temporal threshold of 10 and epistemic threshold of 0.9, on the easy landscape.

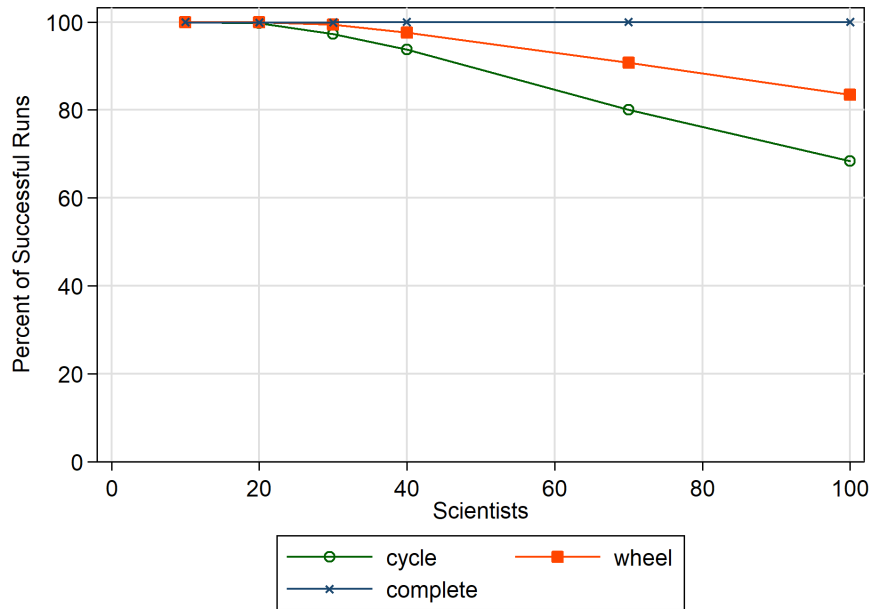


Figure 3: Percentage of successful runs by agents who employ assessment A, with no thresholds, on the easy landscape.

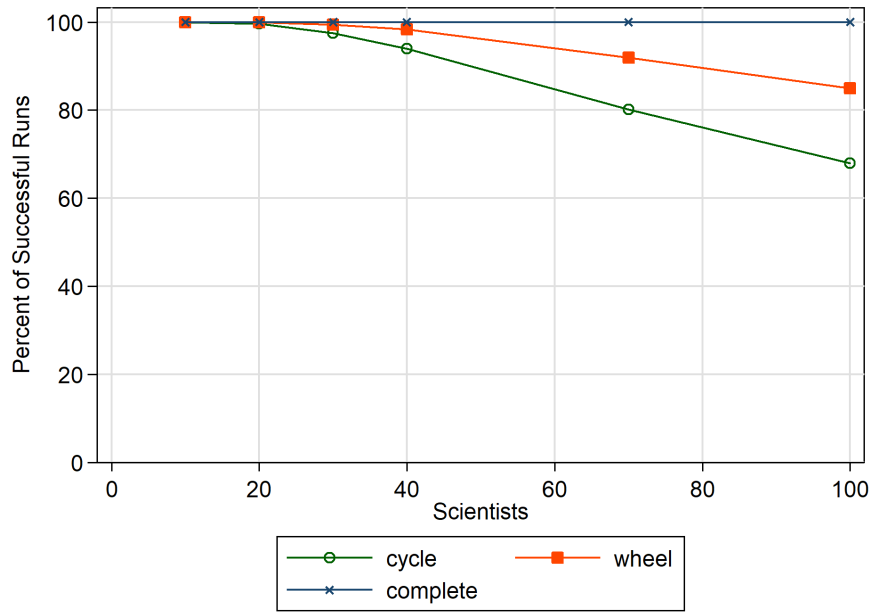


Figure 4: Percentage of successful runs by agents who employ assessment A, with temporal threshold of 10 and epistemic threshold of 0.9, on the easy landscape.

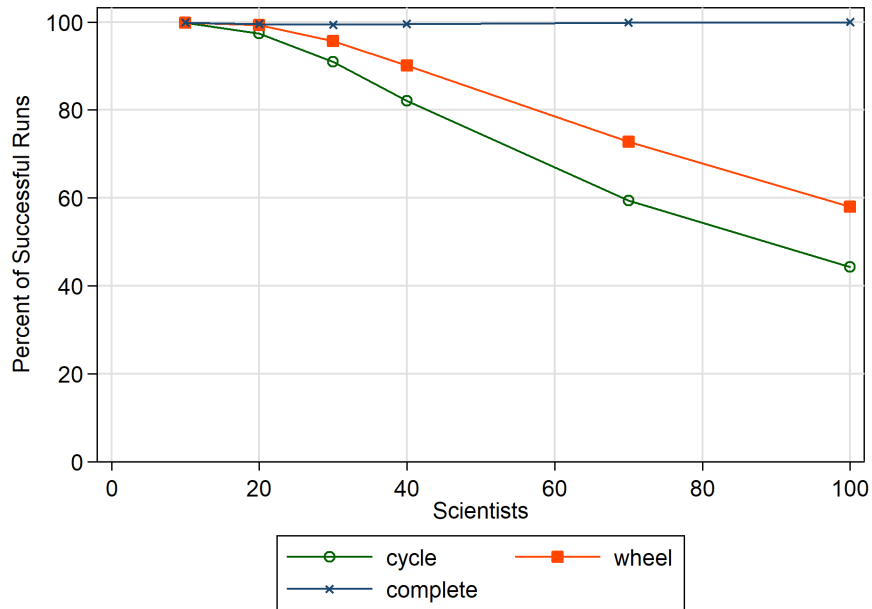


Figure 5: Percentage of successful runs by agents who employ assessment M, with no thresholds, on the easy landscape.

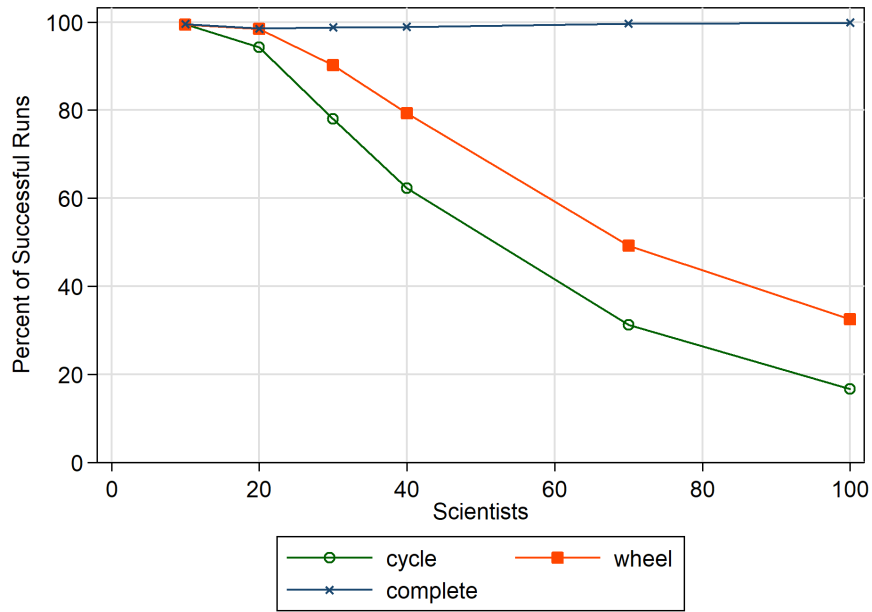


Figure 6: Percentage of successful runs by agents who employ assessment M, with temporal threshold of 10 and epistemic threshold of 0.9, on the easy landscape.

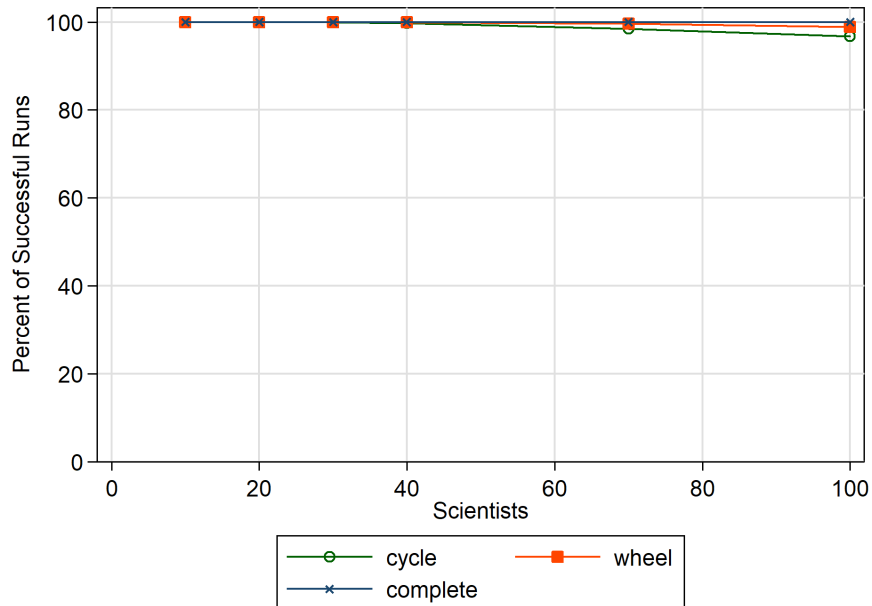


Figure 7: Percentage of successful runs by agents who employ assessment N, with no thresholds, on the easy landscape.

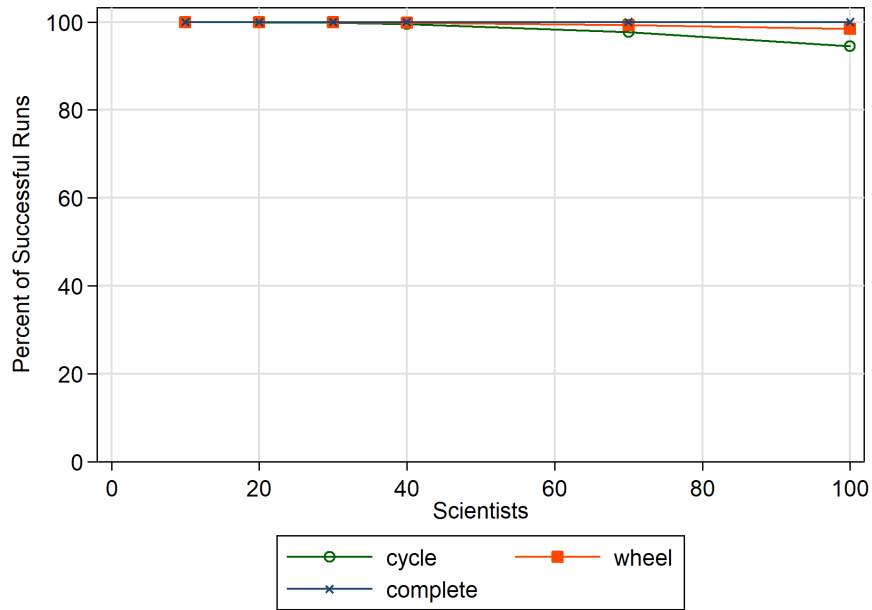


Figure 8: Percentage of successful runs by agents who employ assessment N, with temporal threshold of 10 and epistemic threshold of 0.9, on the easy landscape.

1.2 Time needed for convergence on the easy landscape

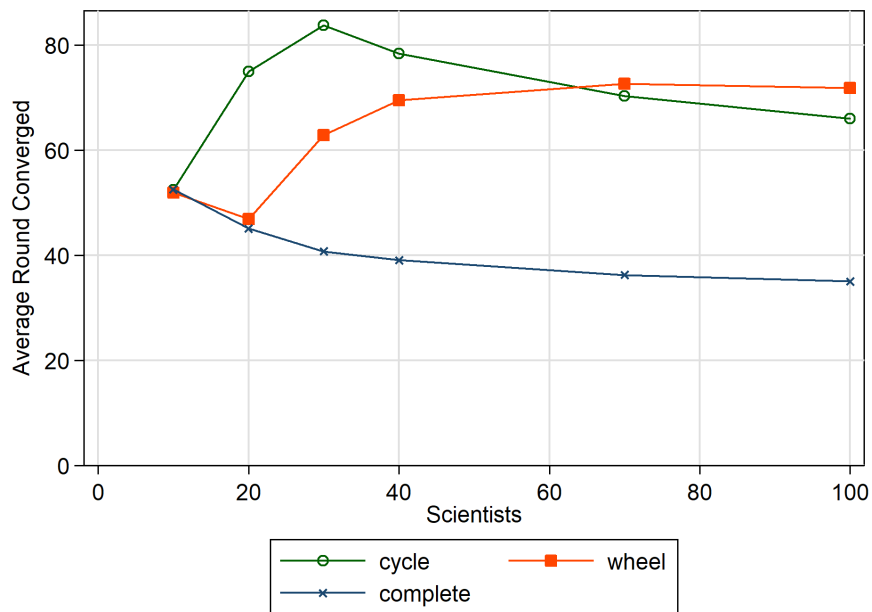


Figure 9: Time needed for convergence by agents who employ assessment D, with no thresholds, on the easy landscape.

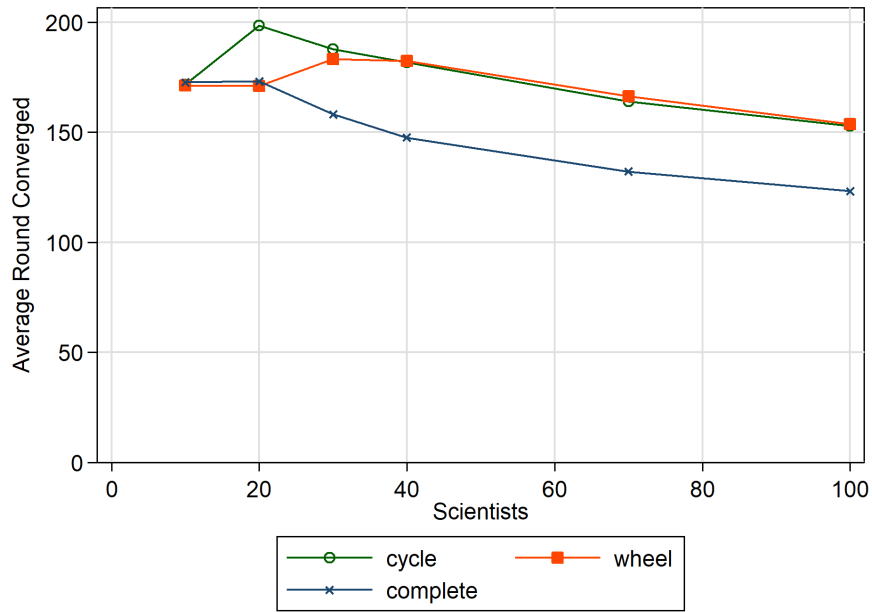


Figure 10: Time needed for convergence by agents who employ assessment D, with temporal threshold of 10 and epistemic threshold of 0.9, on the easy landscape.

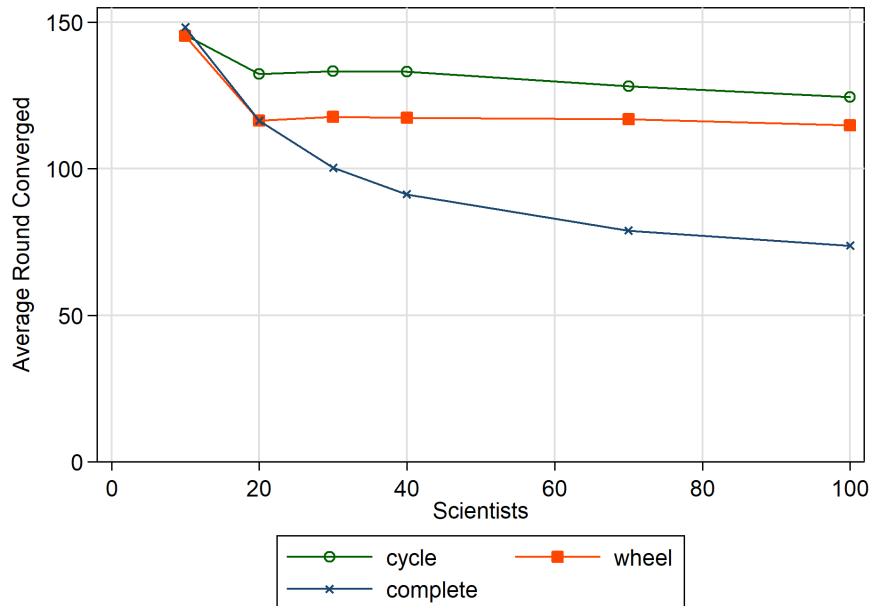


Figure 11: Time needed for convergence by agents who employ assessment A, with no thresholds, on the easy landscape.

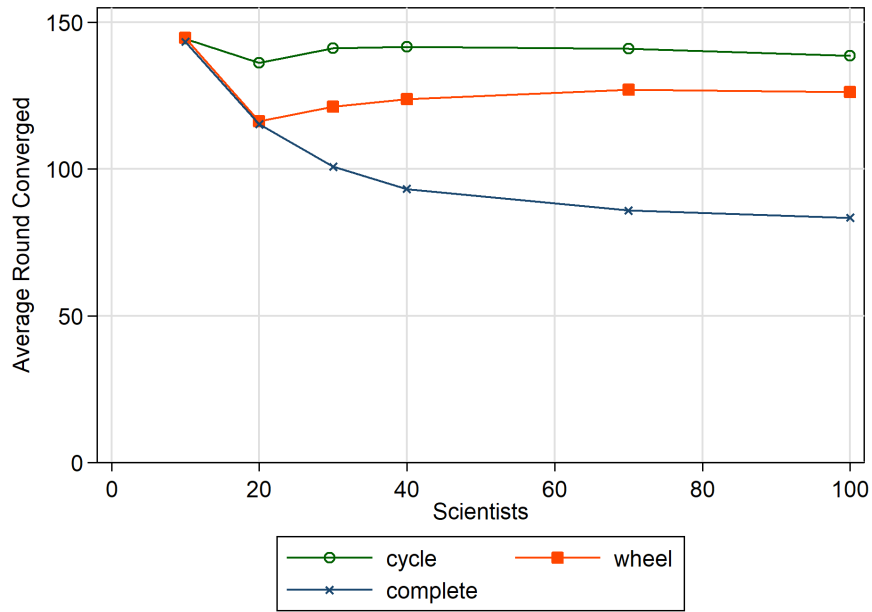


Figure 12: Time needed for convergence by agents who employ assessment A, with temporal threshold of 10 and epistemic threshold of 0.9, on the easy landscape.

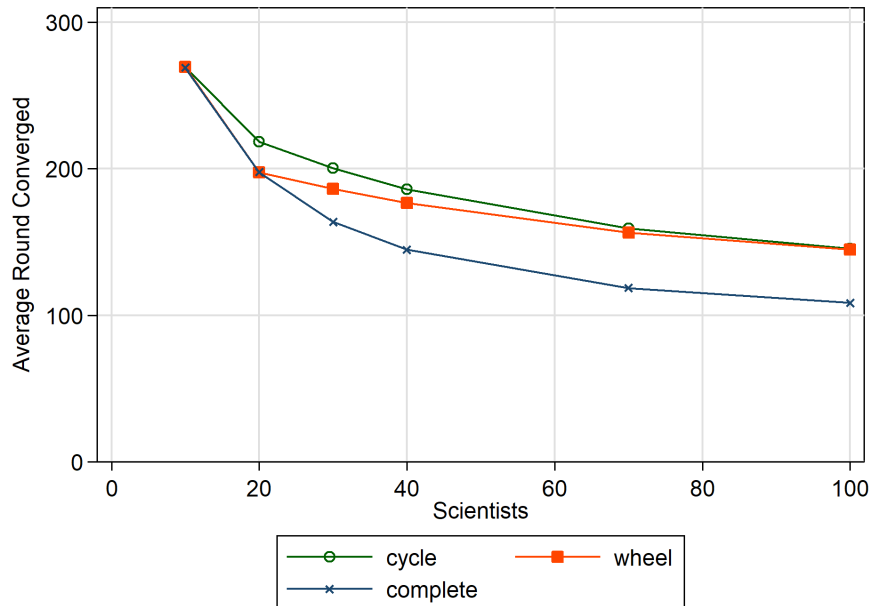


Figure 13: Time needed for convergence by agents who employ assessment M, with no thresholds, on the easy landscape.

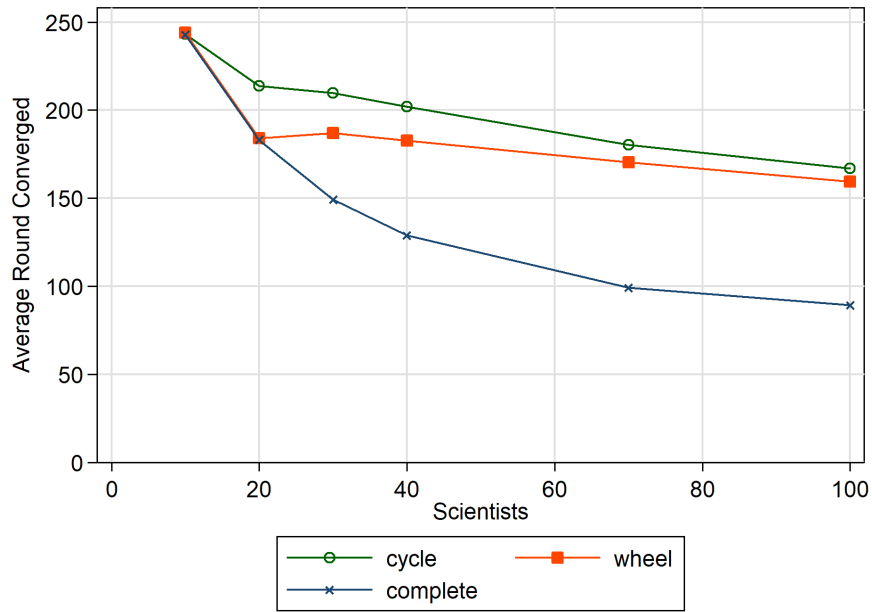


Figure 14: Time needed for convergence by agents who employ assessment M, with temporal threshold of 10 and epistemic threshold of 0.9, on the easy landscape.

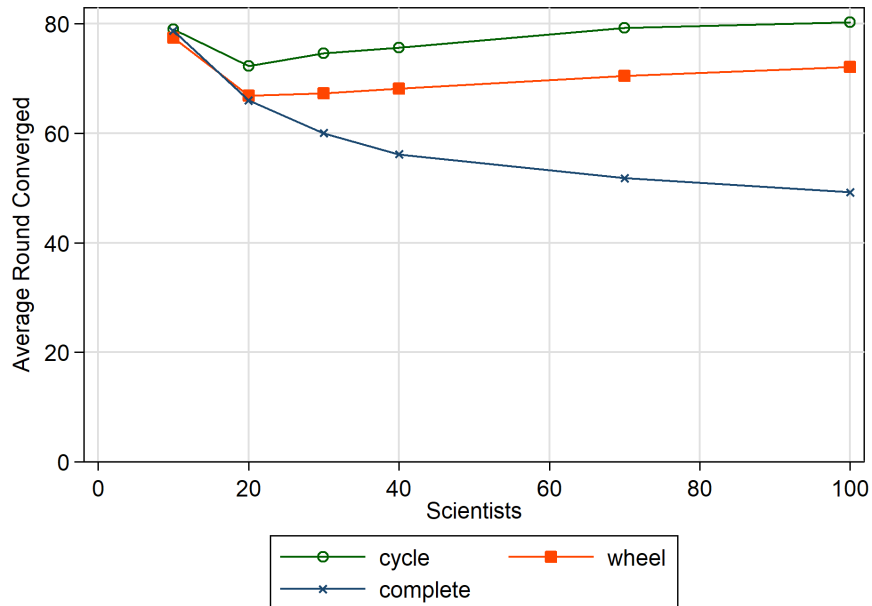


Figure 15: Time needed for convergence by agents who employ assessment N, with no thresholds, on the easy landscape.

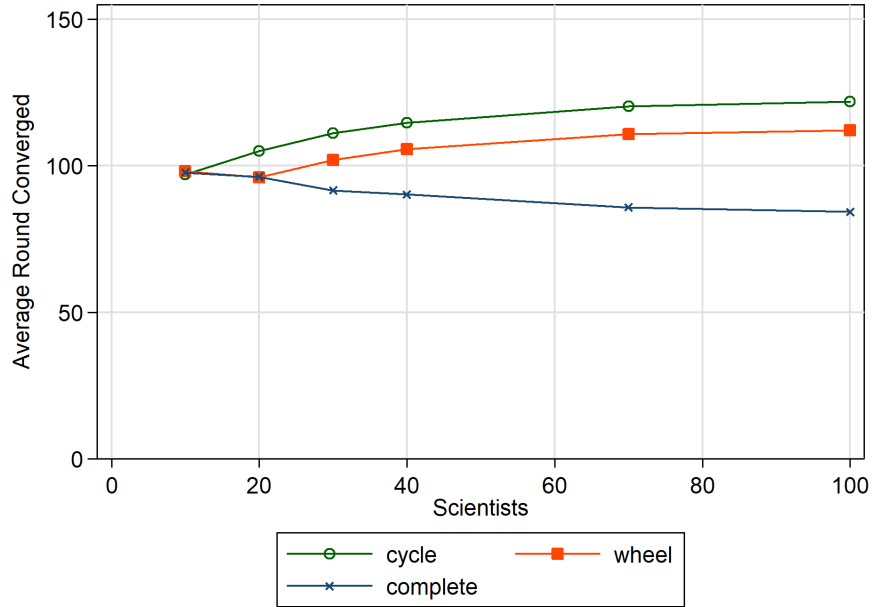


Figure 16: Time needed for convergence by agents who employ assessment N, with temporal threshold of 10 and epistemic threshold of 0.9, on the easy landscape.

2 Difficult landscape

2.1 Success of agents on the difficult landscape

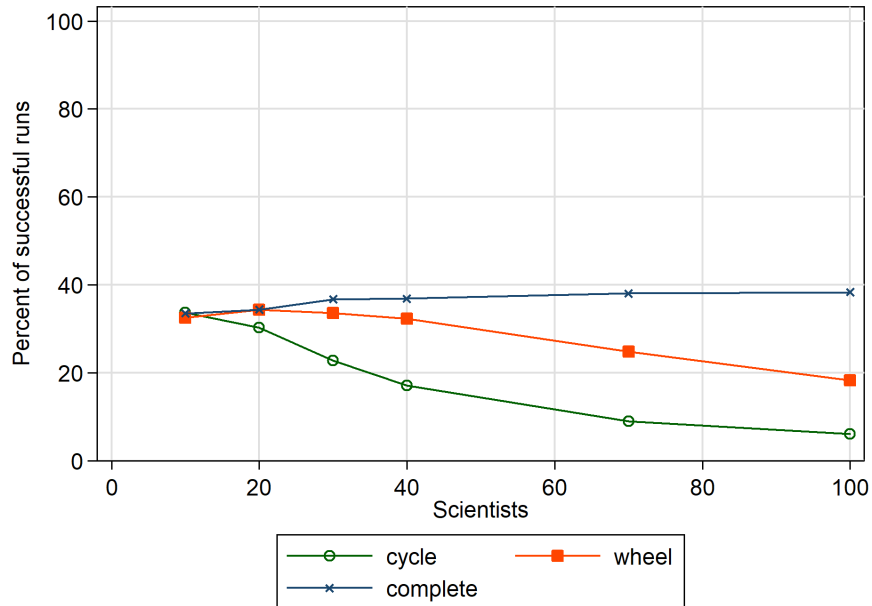


Figure 17: Percentage of successful runs by agents who employ assessment D, with no thresholds, on the difficult landscape.

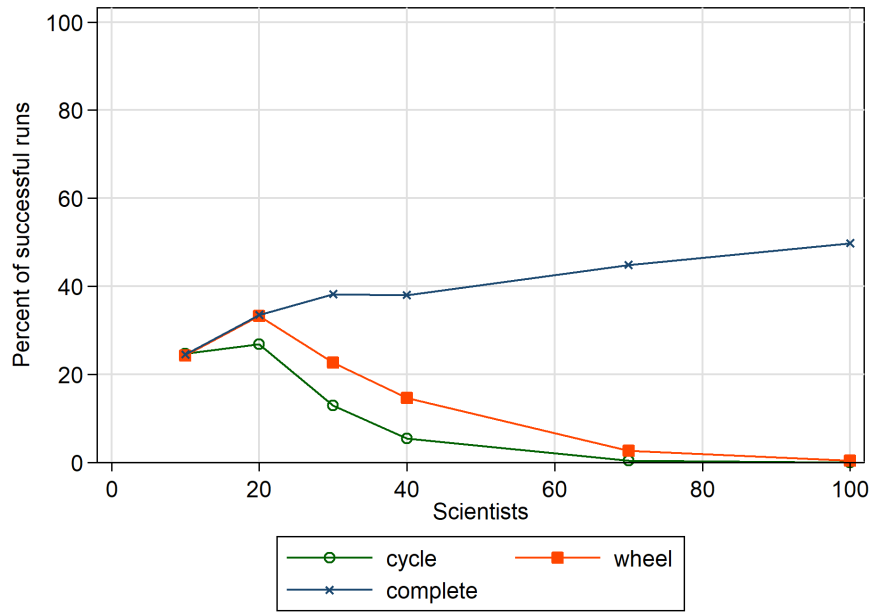


Figure 18: Percentage of successful runs by agents who employ assessment D, with temporal threshold of 10 and epistemic threshold of 0.9, on the difficult landscape.

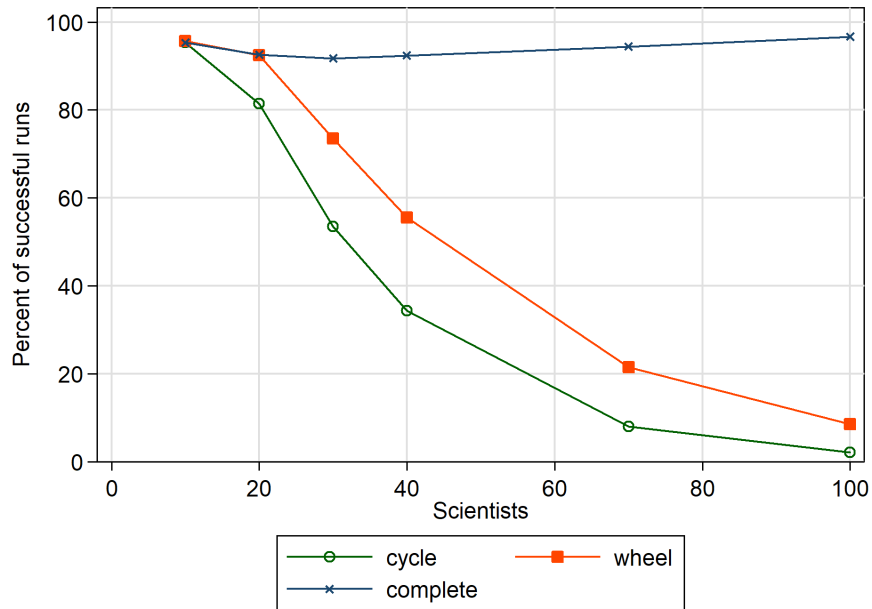


Figure 19: Percentage of successful runs by agents who employ assessment A, with no thresholds, on the difficult landscape.

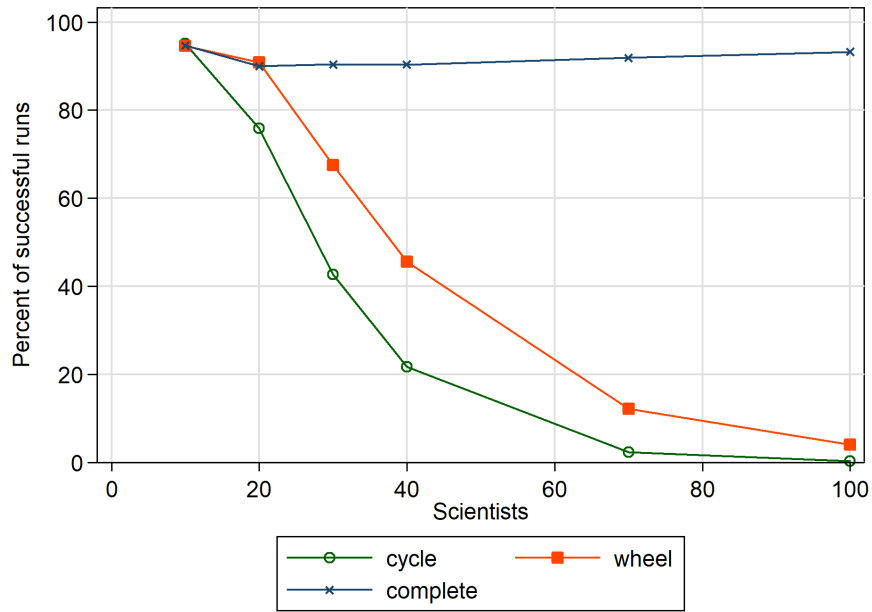


Figure 20: Percentage of successful runs by agents who employ assessment A, with temporal threshold of 10 and epistemic threshold of 0.9, on the difficult landscape.

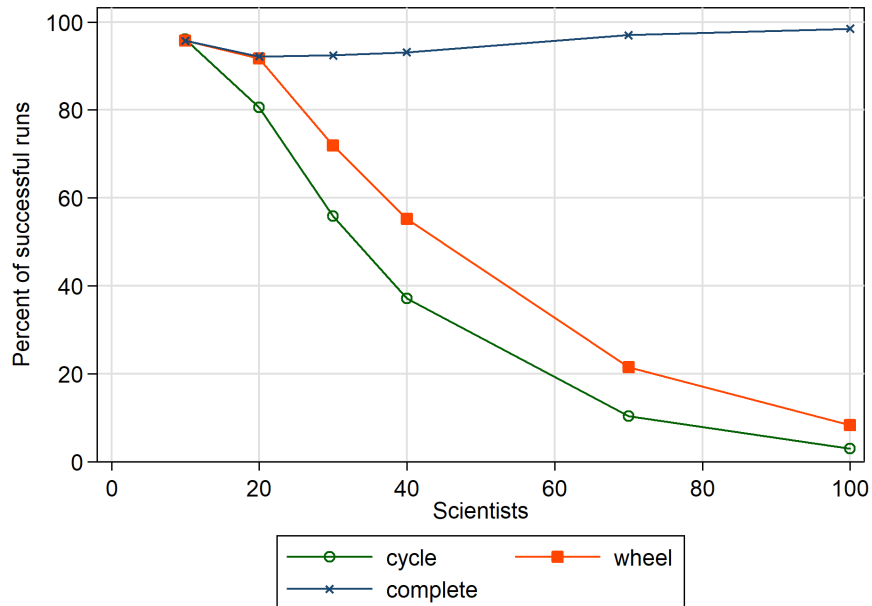


Figure 21: Percentage of successful runs by agents who employ assessment M, with no thresholds, on the difficult landscape.

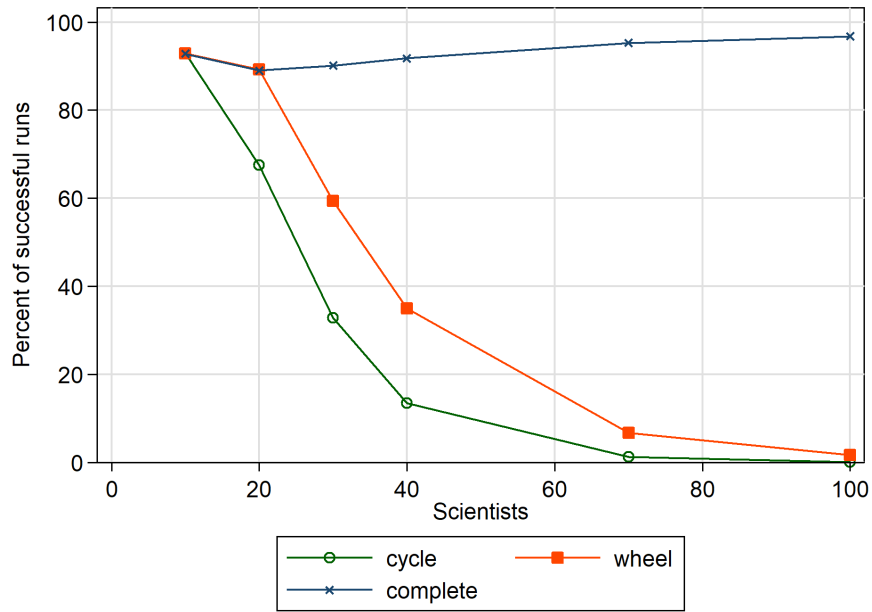


Figure 22: Percentage of successful runs by agents who employ assessment M, with temporal threshold of 10 and epistemic threshold of 0.9, on the difficult landscape.

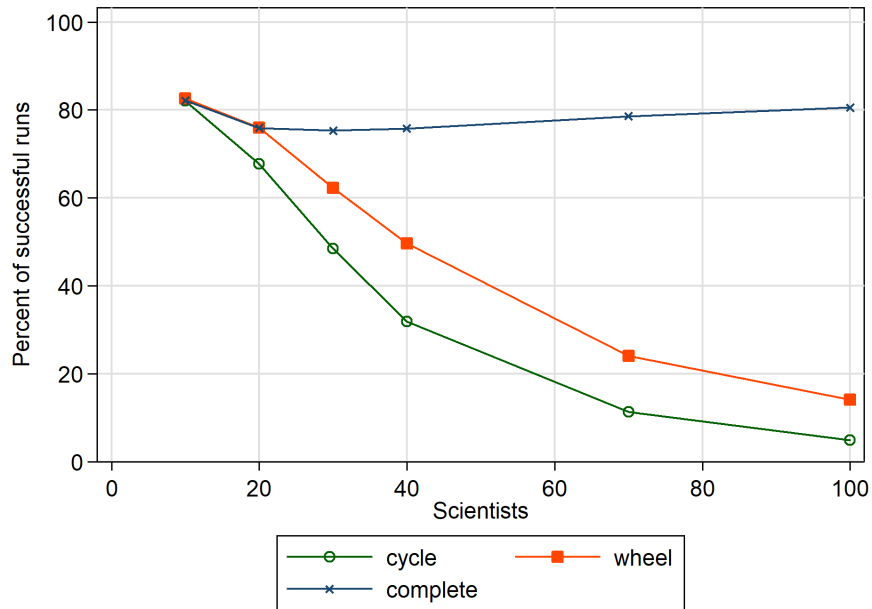


Figure 23: Percentage of successful runs by agents who employ assessment N, with no thresholds, on the difficult landscape.

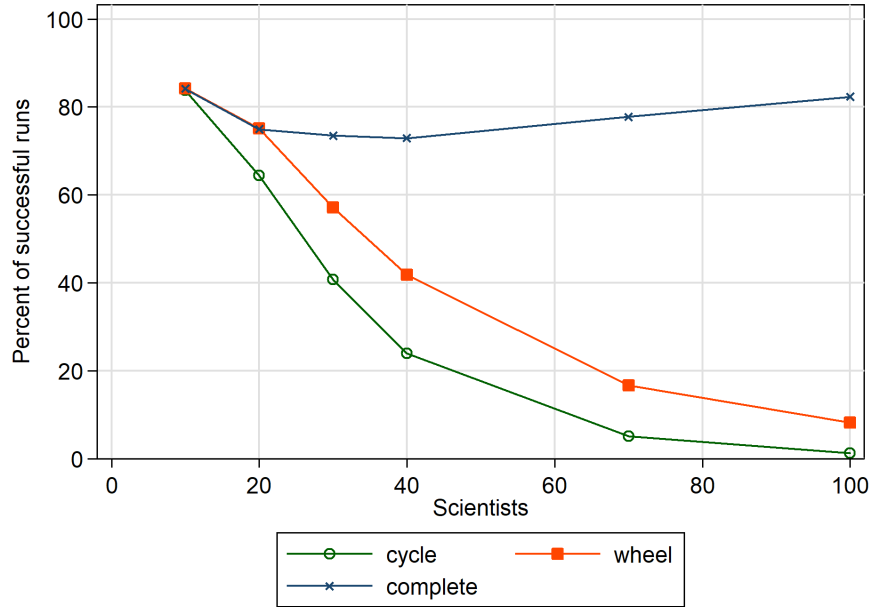


Figure 24: Percentage of successful runs by agents who employ assessment N, with temporal threshold of 10 and epistemic threshold of 0.9, on the difficult landscape.

2.2 Time needed for convergence on the difficult landscape

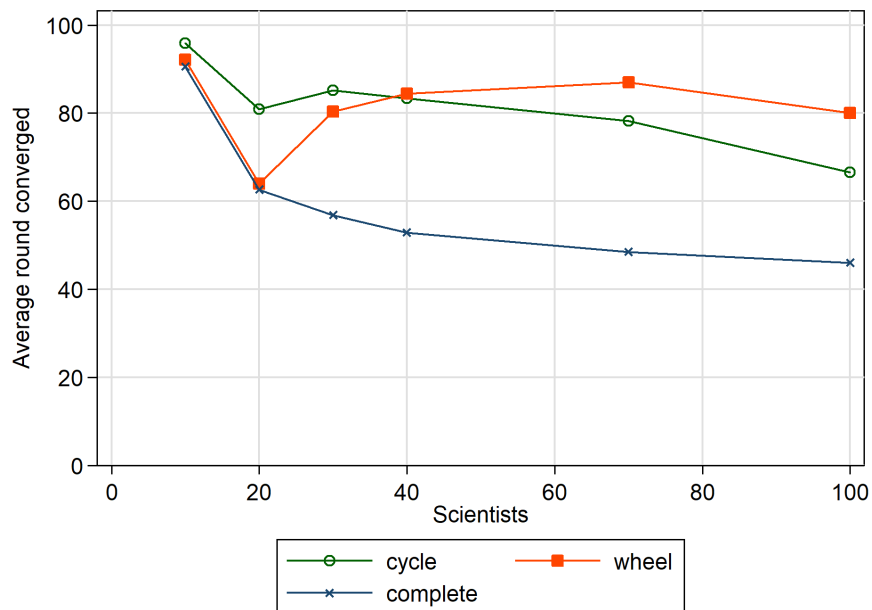


Figure 25: Time needed for convergence by agents who employ assessment D, with no thresholds, on the difficult landscape.

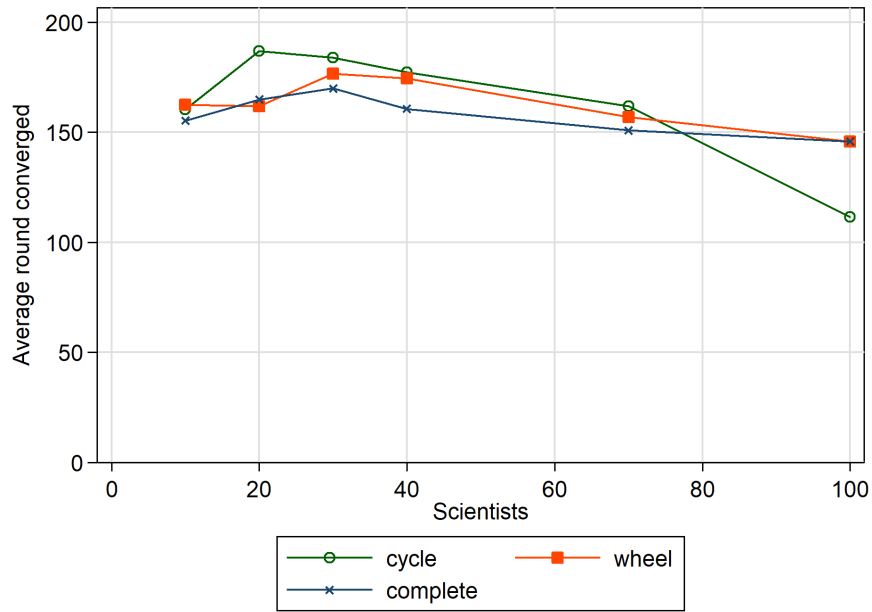


Figure 26: Time needed for convergence by agents who employ assessment D, with temporal threshold of 10 and epistemic threshold of 0.9, on the difficult landscape.

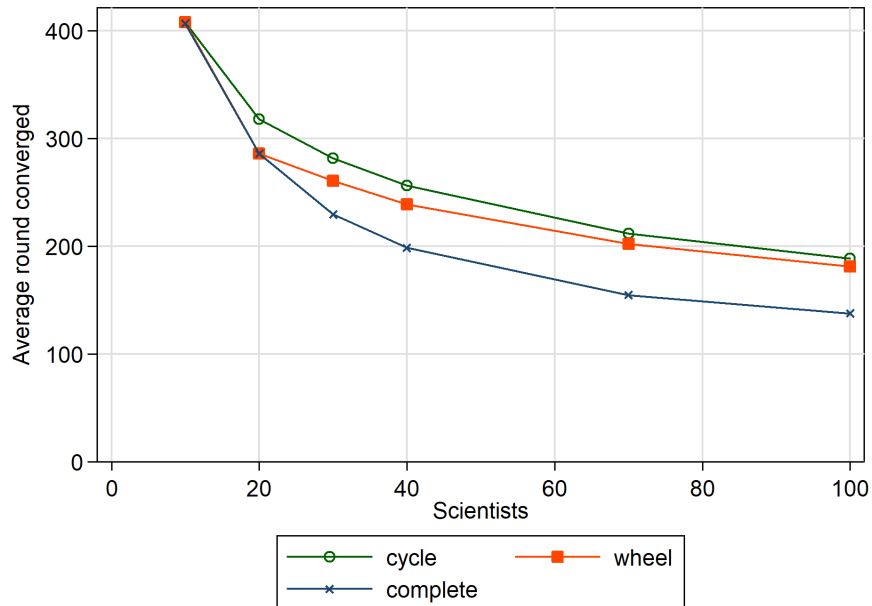


Figure 27: Time needed for convergence by agents who employ assessment A, with no thresholds, on the difficult landscape.

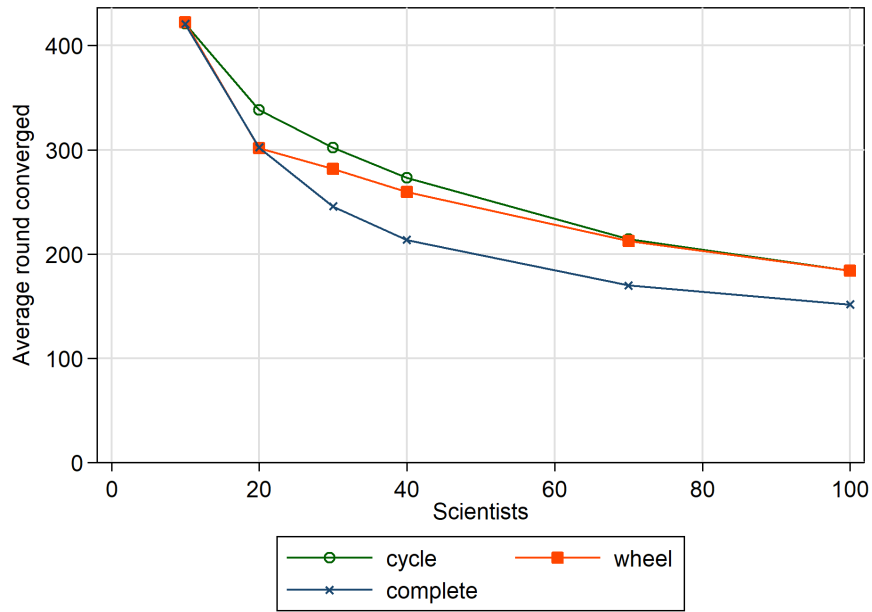


Figure 28: Time needed for convergence by agents who employ assessment A, with temporal threshold of 10 and epistemic threshold of 0.9, on the difficult landscape.

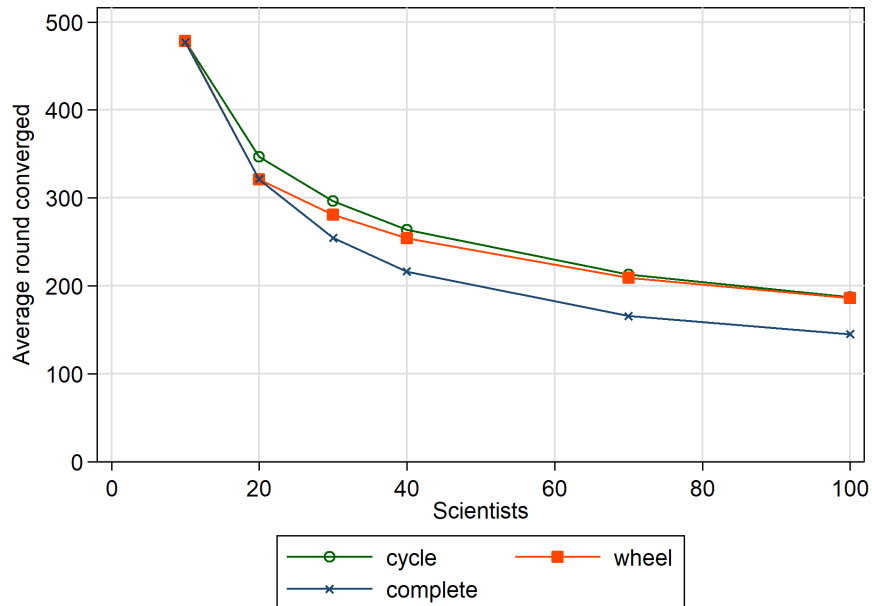


Figure 29: Time needed for convergence by agents who employ assessment M, with no thresholds, on the difficult landscape.

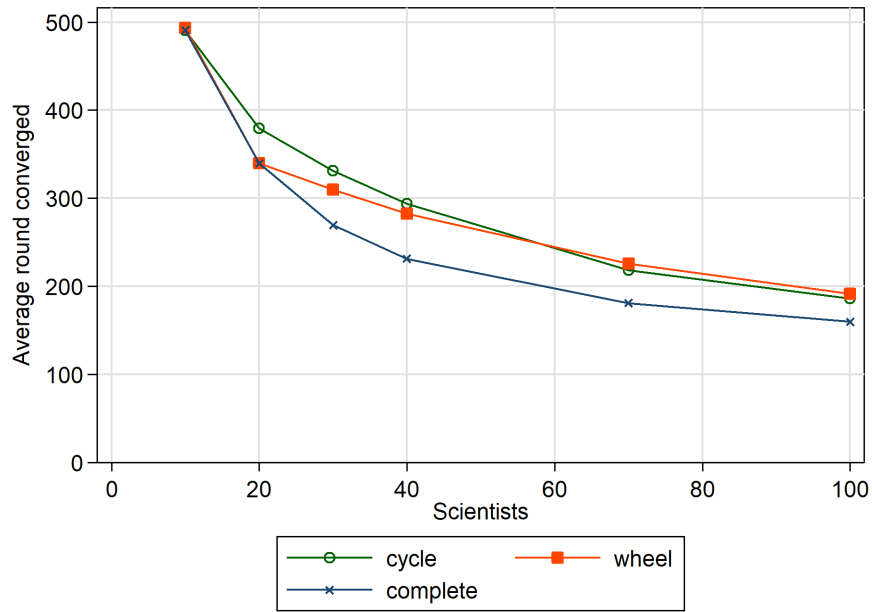


Figure 30: Time needed for convergence by agents who employ assessment M, with temporal threshold of 10 and epistemic threshold of 0.9, on the difficult landscape.

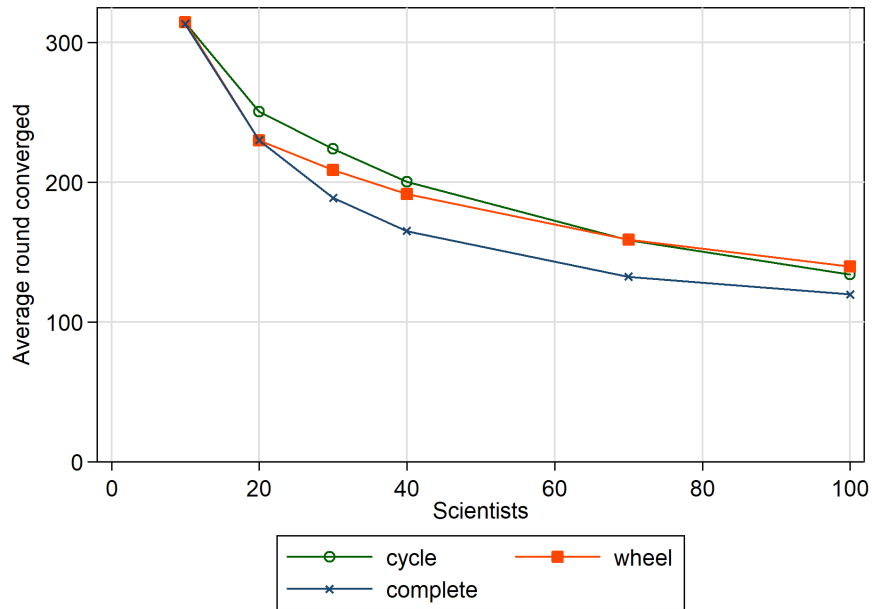


Figure 31: Time needed for convergence by agents who employ assessment N, with no thresholds, on the difficult landscape.

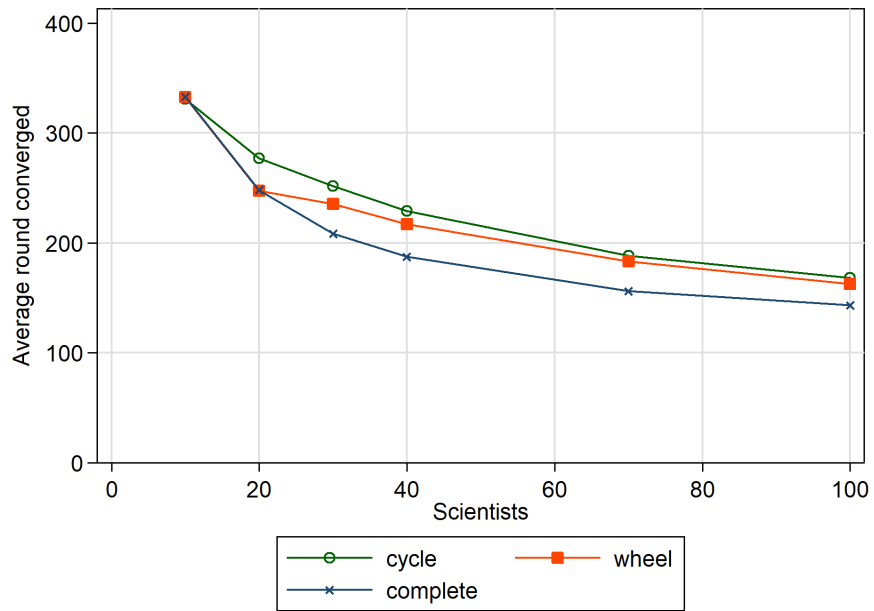


Figure 32: Time needed for convergence by agents who employ assessment N, with temporal threshold of 10 and epistemic threshold of 0.9, on the difficult landscape.